

State of Wyoming Corner Record

(In compliance with the *CORNER PERPETUATION AND FILING ACT*, Wyoming Statutes, 1997, Section 33-29-140, et seq., and the Rules and Regulations of the Board of Registration for Professional Engineers and Professional Land Surveyors)

Reverse side of this form may be used if more space is needed.

Record of original survey and citation of source of historical information (if corner is lost or obliterated). Description of corner monumentation evidence found and/or monument and accessories established to perpetuate the location of this corner. Sketch of relative location of monument, accessories, and reference points with course and distance to adjacent corner(s) (if determined in this survey). Method and rationale for reestablishment of lost or obliterated corner.

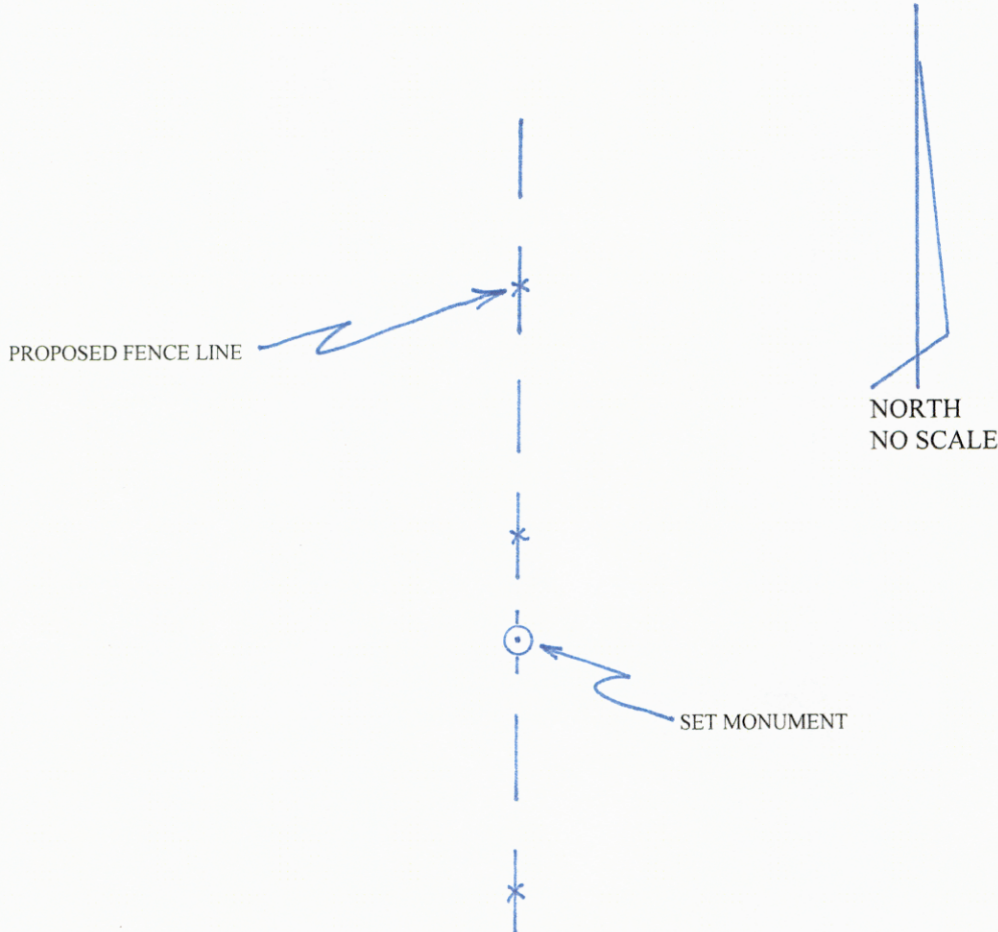
Quarter Corner: 9/10 T12N, R61W, 6th PM, Laramie County, Wyoming.

GLO record: 18"x12"x6" Sand Stone marked ¼ on W. Side.

Found: Nothing found.

Set: 30" No.5 rebar w/2 ½" dia. Aluminum Survey Cap, stamped PLS 4828 and proper identification; with ring of stones.

This corner was reestablished online, midway between the reestablished corners for the NW and SW Corners of said Section 10. Monument stands 4" out of the ground, with mound of stones around it. Landowner intends to build a fence line along this line.



SEE MAP ON BACK OF THIS PAGE FOR TIES TO SURROUNDING CORNERS.

Date of Field Work: JULY 2013 Office Reference: _____

CROSS INDEX DIAGRAM

A	1	2	3	4	5	6	7	8	9	10	11	12	13	14	15	16	17	18	19	20	21	22	23	24	25
B																									
C		6		5		4		3		2		1													
D																									
E																									
F																									
G		7		8		9		10		11		12													
H																									
J																									
K																									
L		18		17		16		15		14		13													
M																									
N																									
O																									
P		19		20		21		22		23		24													
Q																									
R																									
S																									
T		30		29		28		27		26		25													
U																									
V																									
W																									
X		31		32		33		34		35		36													
Y																									
Z																									

Land Surveyor / Firm / Address

Studley Land Surveying, PC

John J. Studley, PLS No. 4828

615 West Dale Blvd.

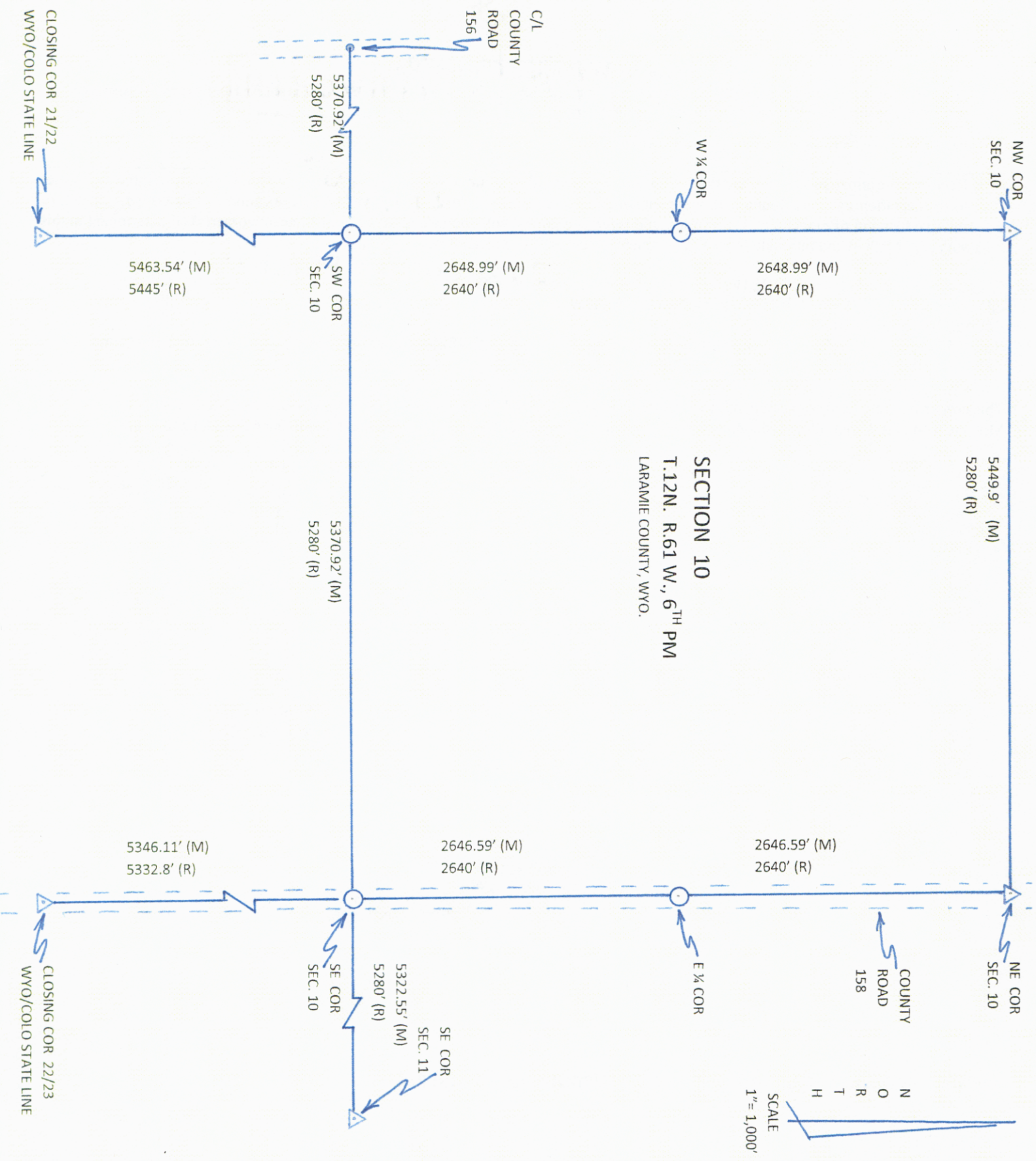
Cheyenne, WY 82009

Telephone: 307-287-4755

This corner record was prepared by me or under my direction and supervision.
SEAL & SIGNATURE



Corner Name: Quarter Corner common to Sections: 9 & 10 T 12 N R 61 W : 6th P.M. Cross-Index No.: G-13
SBRPEPLS/PLSW: March 1994; PLSW January 1998



SECTION 10
T.12N., R.61W., 6TH PM
 LARAMIE COUNTY, WYO.

N
O
R
T
H
SCALE
1" = 1,000'

MONUMENTS FOUND AND ACCEPTED FOR THIS SURVEY.

MONUMENTS SET THIS SURVEY – SET A 30" NO.5 REBAR WITH 2 1/2" ALUMINUM SURVEY CAP, BY PLS NO. 4828, PROPERLY INSCRIBED WITH IDENTIFICATION.

W 1/4 COR. SEC. 10, T.12N., R.61W., 6TH P.M.

This corner was reestablished online, midway between the reestablished corners for the NW and SW Corners of said Section 10. Monument stands 4" out of the ground, with mound of stones around it. Landowner intends to build a fence line along this line.

